

System provides for

- ® automatic or manual setting of exposure modes;
- ® automatic mammary gland compression;
- ® higher diagnostic value of pictures due to digital processing of X-ray image (brightness and contrast correction, filtering, zooming, contouring areas of interest, geometric parameters determination, positive and negative imaging, rotation etc.);
- ® sending picture over the Internet (DICOM 3.0 format);
- ® recording and archiving pictures and opinions on paper, floppy discs, CDs, on PC HDD;
- ® examinations:
 - in diagnostic mode — up to 20-25 patients per shift;
 - in screening mode — up to 45-50 patients per shift;
- ® system leaves open the possibility to conduct traditional X-ray examinations using X-ray film.



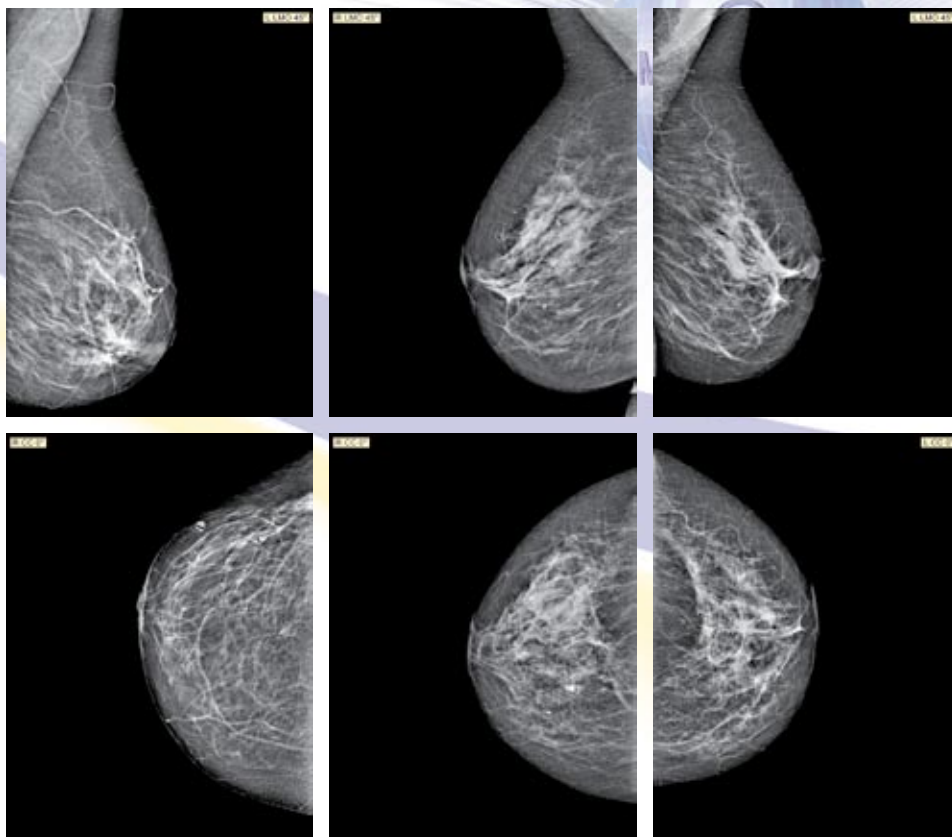
MADIS

DIGITAL MAMMOGRAPHIC SYSTEM

Capability

Digital mammographic system «MADIS» allows to conduct all kinds of diagnostic and screening programs of mammary gland, used in mammography.

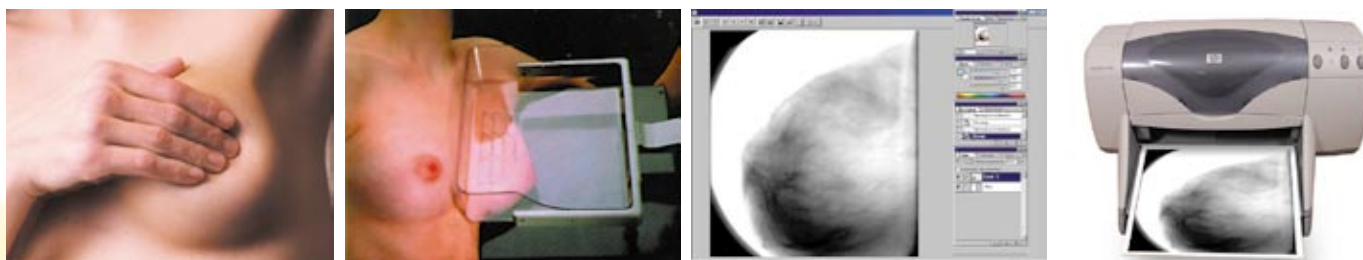
Digital mammography system Madis – is a modern means of diagnosis of breast cancer. The complex is based on the latest advances in microelectronics and digital technology acquisition and image processing. It has high resolution and ensures the quality of shadow images, sufficient to meet all types of surveys, preusmotrennyh in mammalogy.



Performance specifications

Operational field, mm	240×180
Spatial resolution limit, line pairs/ mm	7,0
X-ray tube voltage, kV	28...40
X-ray tube current, uA, max	200
Exposure time, s	from 0,1 to 9,0
Surface exposure dose per picture, mSv	0,1
Contrast threshold at the surface exposure dose of 1 mR, %, max	2
Dynamic range, min	100
Brightness gradations on the monitor screen	256
Archiving system	CD
Power consumption, W, max	500
Power supply	220 V, 50 Hz

New generation digital apparatus will provide efficient, prompt and reliable diagnising



271, vul. Akademika Pavlova, Kharkiv, 61054. Phone/fax: (+38 057) 717-28-79, 738-05-28
E-mail: radmir@niiri.kharkov.com, <http://www.radmir.kharkov.com>